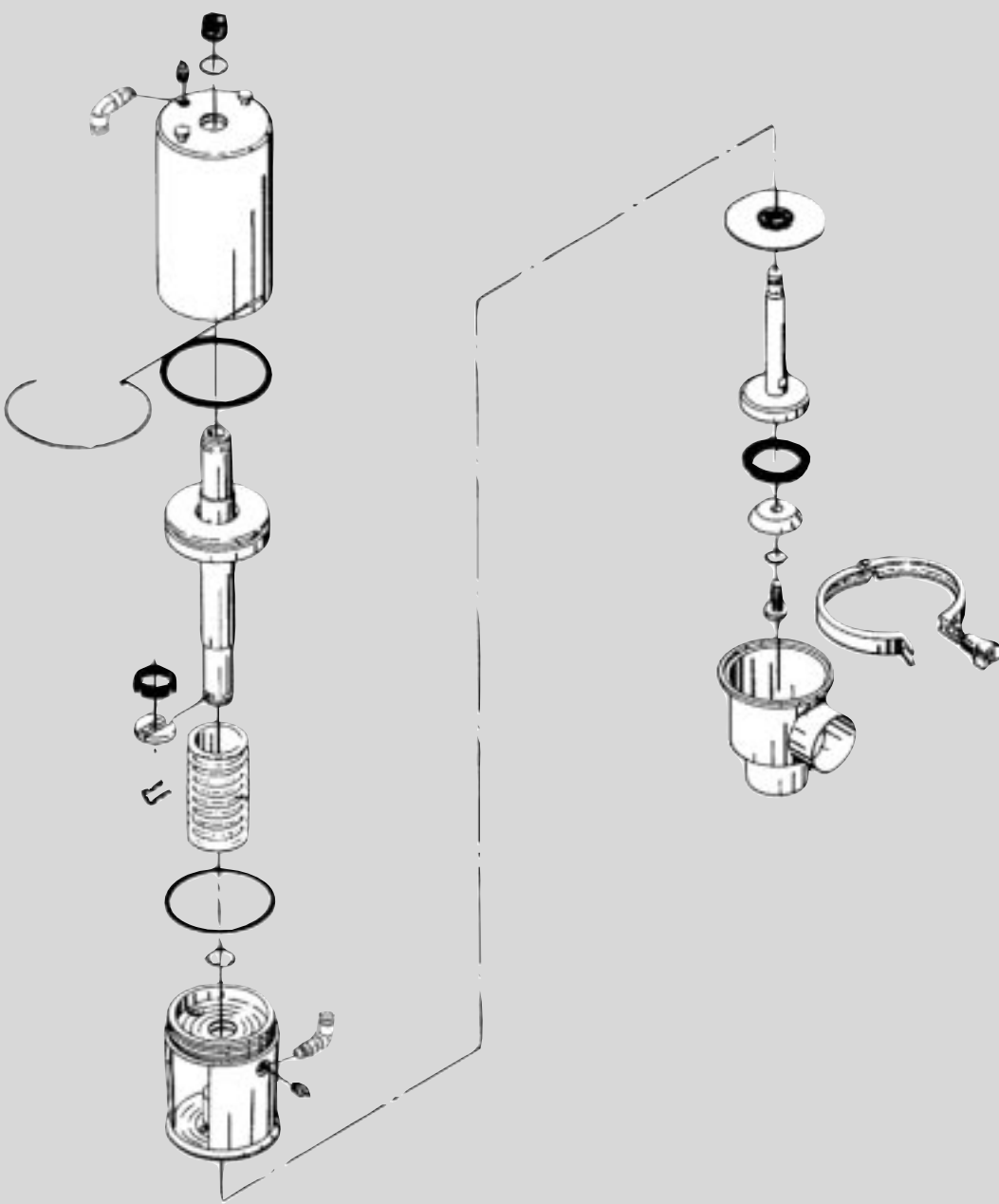
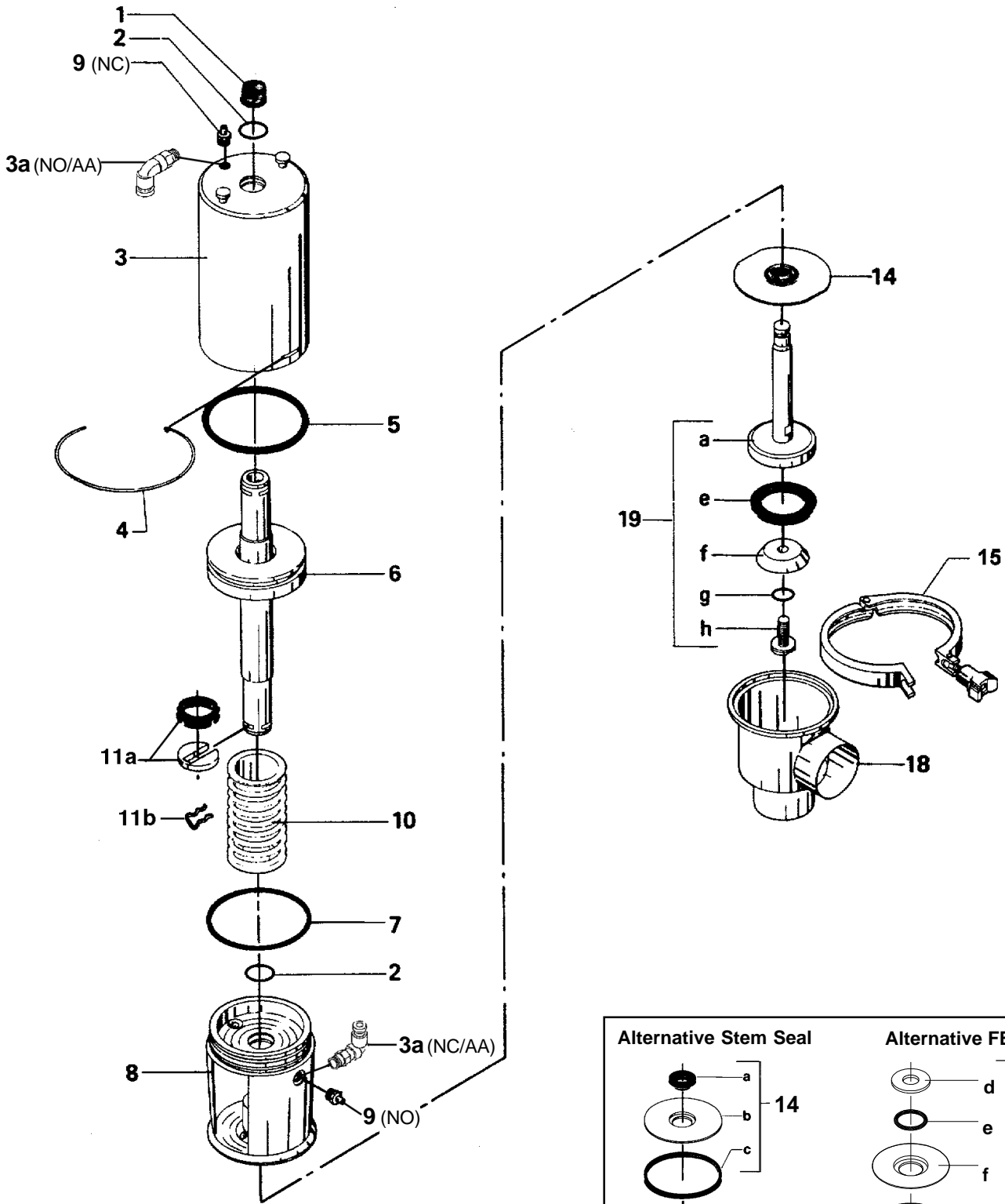


Spare Parts List

SRC Tangential Seat Valve



Alfa Laval



Sanitary Remote Controlled Valve SRC-TL/SRC-TR Shut-off Valve Tangential Outlet

Actuator

Pos.	Qty.	Description	2-inch Part No.	2.5-inch Part No.	3-inch Part No.
	1	Complete actuator-10 (NO) industrial	3135302061	3135302061	3135302141
	1	Complete actuator-20 (NC) industrial	3135302062	3135302062	3135302142
	1	Complete actuator-30 (A/A) industrial	3135302063	3135302063	3135302143
	1	Complete actuator-10 (NO) polished	3135310011	3135310011	3135310021
	1	Complete actuator-20 (NC) polished	3135310012	3135310012	3135310022
	1	Complete actuator-30 (A/A) polished	3135310013	3135310013	3135310023
1	1	Cap	31801-0525-6	31801-0525-6	31801-0525-5
2Δ	2	O-ring	223406-25	223406-25	223406-49
3	1	Cylinder	31353-0139-1	31353-0139-1	31353-0185-1
3 a	1	Air fitting (NO)	881-249420	881-249420	881-249420
	1	Air fitting (NC)	881-249420	881-249420	881-249420
	2	Air fitting (A/A)	881-249420	881-249420	881-249420
4Δ	1	Lock wire	31353-0151-1	31353-0151-1	31353-0189-1
5Δ	1	O-ring	223401-74	223401-74	223401-75
6	1	Piston	31353-0621-1	31353-0621-1	31353-0619-1
7Δ	1	O-ring	223406-67	223406-67	223406-17
8	1	Bonnet	31353-0133-1	31353-0133-1	31353-0190-1
9	1	Exhaust plug (NO)	31353-0154-1	31353-0154-1	31353-0154-1
	1	Exhaust plug (NC)	31353-0154-1	31353-0154-1	31353-0154-1
10*	1	Spring assembly (standard)	31353-0625-1	31353-0625-1	31353-0622-1
	1	Spring assembly with extra strong spring	31353-0625-2	31353-0625-2	31353-0622-2
11 aΔ	1	Clip, complete	31353-0793-1	31353-0793-1	31353-0793-2
	b 1	Clip (period 2/68 to 7/84)	31353-0130-1	31353-0130-1	31353-0130-1

* Only for actuator - 10 and -20.

Parts marked with Δ are included in the actuator service kits.

Valve Parts

Pos.	Qty	Description	2-inch Part No.	2.5-inch Part No.	3-inch Part No.
Steam seal					
14	1	Lip seal, EPDM (standard)	31353-0155-1	31353-0155-1	31353-0188-1
	1	Lip seal, Nitrile	31353-0155-4	31353-0155-4	31353-0188-2
	1	Lip seal, Viton	31353-0155-3	31353-0155-3	31353-0188-3
Clamp					
15	1	Heavy duty clamp	9612-0112-04	9612-0112-04	9612-0112-05
TL Valve Body Left Side (polished)					
18	1	W, 2 ports	31353-0615-2	31353-0616-2	31353-0617-2
	1	GC, 2 ports	884-25099	884-29611	884-25716
TR Valve Body Right Side (polished)					
18	1	W, 2 ports	31353-0615-1	31353-0616-1	31353-0617-1
	1	GC, 2 ports	884-25859	884-25207	884-25348

Recommended Spare Parts: Service kit

Alfa Laval

**Sanitary Remote Controlled Valve
SRC-TL/SRC-TR Shut-off Valve
Tangential Outlet**

Alfa Laval

Valve Parts (continued)

Pos.	Qty	Description	2-inch Part No.	2.5-inch Part No.	3-inch Part No.
Valve Plug					
19	1	Plug, single, complete EPDM (standard)	31353-0331-1	31353-0332-1	31353-0333-1
	1	Plug, single, complete Nitrile	31353-0331-2	31353-0332-2	31353-0333-2
	1	Plug, single, complete Viton	31353-0331-3	31353-0332-3	31353-0333-3
a	1	Stem	31353-0377-1	31353-0378-1	31353-0341-1
eΔ	1	Packing, EPDM (standard)	31353-0321-1	31353-0322-1	31353-0324-1
	1	Packing, Nitrile	31353-0321-2	31353-0322-2	31353-0324-2
	1	Packing, Viton	31353-0321-3	31353-0322-3	31353-0324-3
f	1	Washer	31353-1010-2	31353-1010-3	31353-1010-4
gΔ	1	O-ring, EPDM (standard)	990034-01	990034-01	990034-01
	1	O-ring, Nitrile	223404-21	223404-21	223404-21
	1	O-ring, Viton	223404-35	223404-35	223404-35
h	1	Screw	31353-1011-1	31353-1011-1	31353-1011-1
Δ	1	Service kit for valve, EPDM	9611-92-0013	9611-92-0016	9611-92-0019
Δ	1	Service kit for valve, NBR	9611-92-0014	9611-92-0017	9611-92-0020
Δ	1	Service kit valve, FPM	9611-92-0015	9611-92-0018	9611-92-0021

Parts marked with Δ are included in the valve service kits.

Alternative for Stem Seal

Pos.	Qty	Description	2-inch Part No.	2.5-inch Part No.	3-inch Part No.
Stem Seal					
14	1	Lip seal kit, EPDM (standard)	9611-92-0078	9611-92-0078	9611-92-0142
	1	Lip seal kit, NBR	9611-92-0079	9611-92-0079	9611-92-0143
	1	Lip seal kit, FPM	9611-92-0080	9611-92-0080	9611-92-0144
a●	1	Lip seal, EPDM (standard)	9612-2806-01	9612-2806-01	9612-3088-01
	1	Lip seal, NBR	9612-2806-02	9612-2806-02	9612-3088-02
	1	Lip seal, FPM	9612-2806-03	9612-2806-03	9612-3088-03
b	1	Plate	9612-2805-01	9612-2805-01	9612-3087-01
c●	1	Seal ring, EPDM (standard)	31353-0128-1	31353-0128-1	31353-0205-1
	1	Seal ring, NBR	31353-0128-2	31353-0128-2	31353-0205-2
	1	Seal ring, FPM	31353-0128-3	31353-0128-3	31353-0205-3
FEP Seal					
14	d 1	Washer	31353-0452-1	31353-0452-1	31353-0452-2
	e● 1	O-ring FEP/Silicone	9611-99-2909	9611-99-2909	9611-99-2910
	f 1	Holder	31353-0453-1	31353-0453-1	31353-0454-1
	g● 1	Valve body packing	31353-0451-1	31353-0451-1	31353-0451-2
●	1	Service kit for alternative stem seal, EPDM	9611-92-0475	9611-92-0479	9611-92-0483
●	1	Service kit for alternative stem seal, NBR	9611-92-0476	9611-92-0480	9611-92-0484
●	1	Service kit for alternative stem seal, FPM	9611-92-0477	9611-92-0481	9611-92-0485
●	1	Service kit for alternative stem seal, FEP	9611-92-0478	9611-92-0482	9611-92-0486

Parts marked with ● are included in the alternative stem seal service kits.

Recommended Spare Parts: Service kit

Alfa Laval
8201 104th Street
Pleasant Prairie, WI 53158-0909
Telephone: 800-558-2060
Fax: 262-947-4724
www.us.flow.alfalaval.com

Alfa Laval