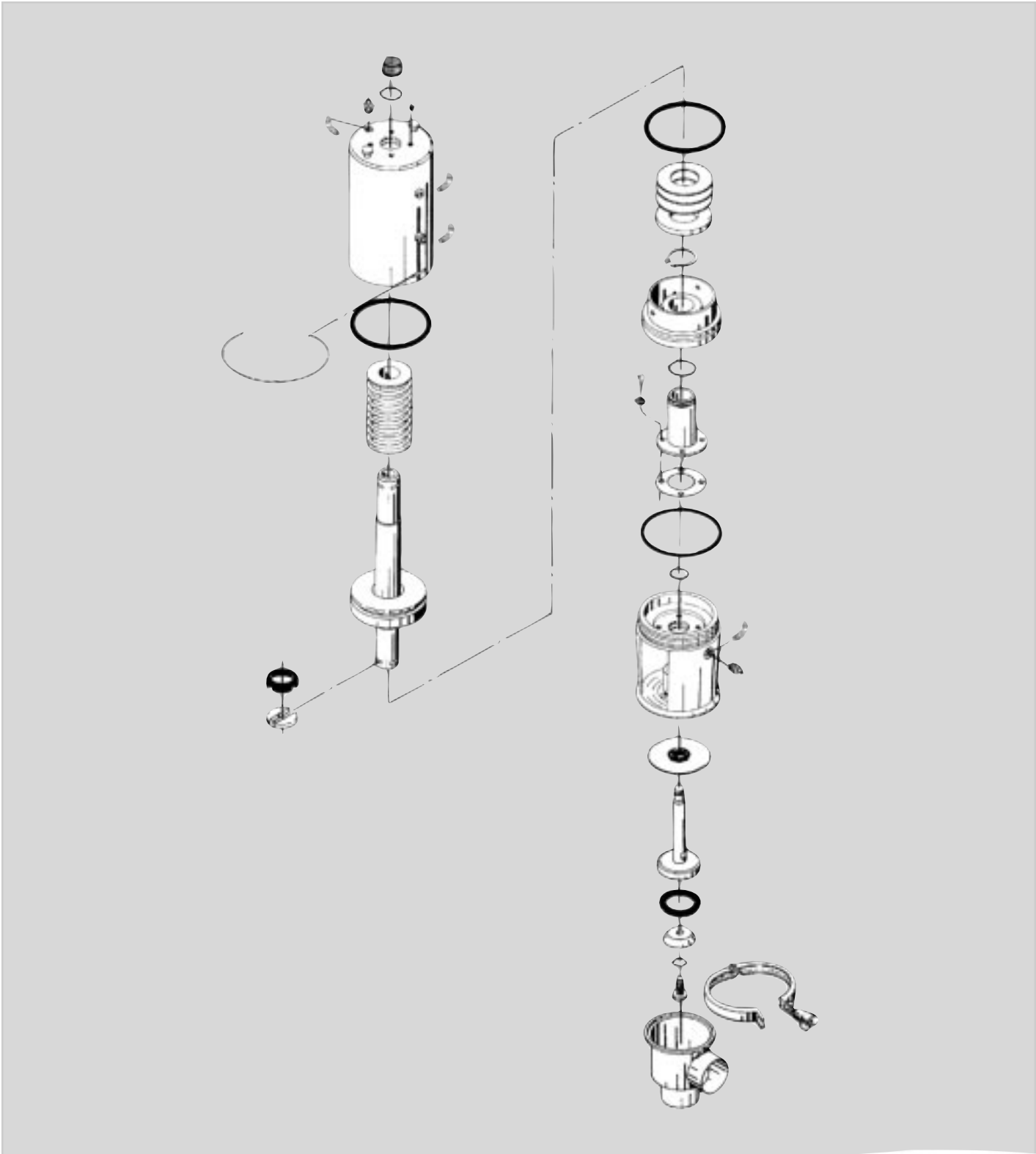
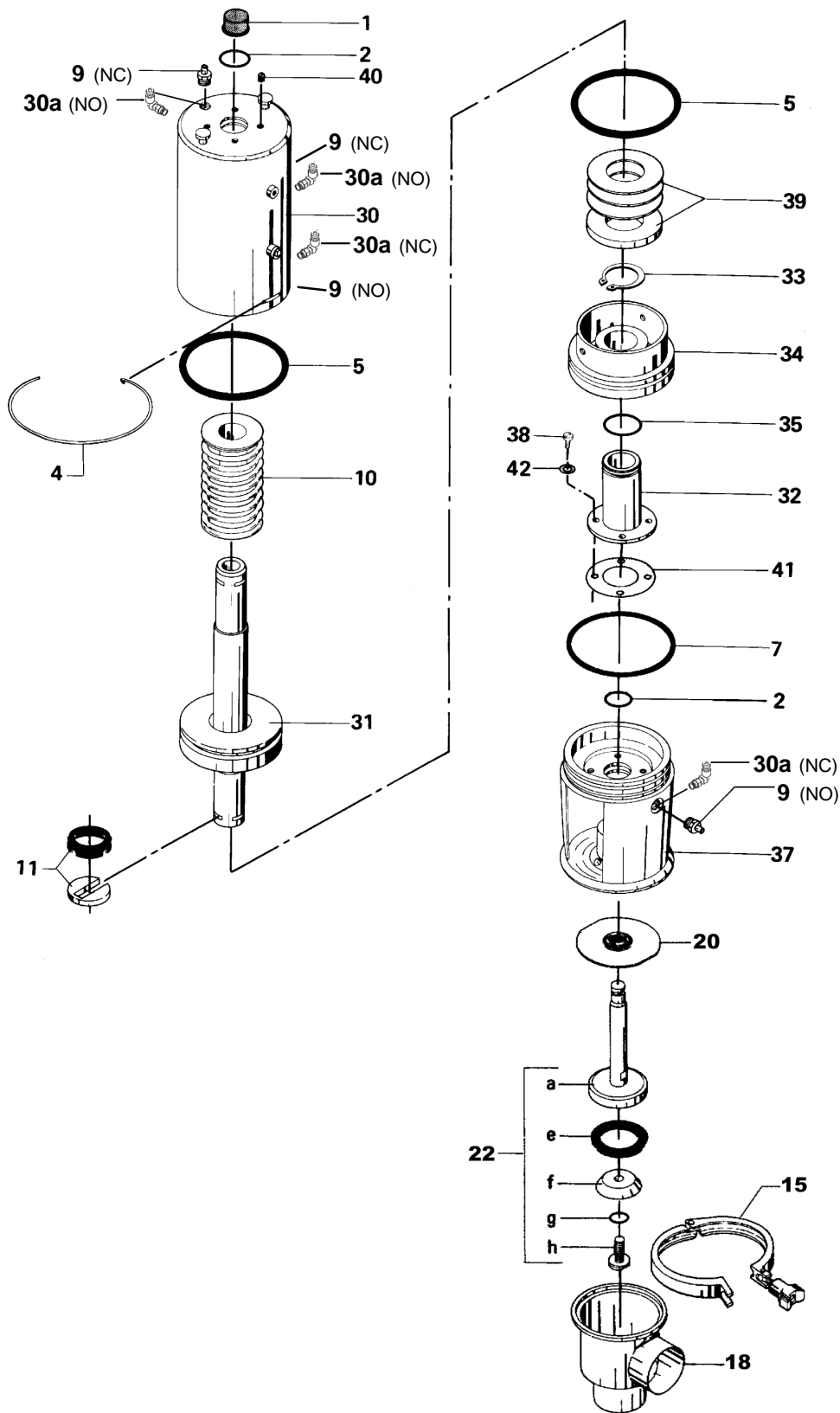


Spare Parts List

SRC - Two-Step Three-Position Seat Valve





Sanitary Remote Controlled Valve SRC - Two-Step/Three-Position Valve

Pos.	Qty.	Description	1.5-2.5" Part No.	3-4" Part No.
		Complete actuator-60 (NO) industrial	31353-0447-1	31353-0448-1
		Complete actuator-70 (NC) industrial	31353-0447-2	31353-0448-2
		Complete actuator-60 (NO) polished	884-25983	884-32208
		Complete actuator-70 (NC) polished	884-25982	884-23773
1	1	Cap	31801-0525-6	31801-0525-5
2Δ	2	O-ring	223406-25	223406-49
4Δ	1	Lock wire	31353-0151-1	31353-0189-1
5Δ	2	O-ring	223401-74	223401-75
7Δ	1	O-ring	223406-67	223406-17
9	2	Exhaust plug (NO)	31353-0154-1	31353-0154-1
	2	Exhaust plug (NC)	31353-0154-1	31353-0154-1
10	1	Spring assembly (standard black).....	31353-0625-1	31353-0622-1
	1	Spring assembly with extra strong spring (white).....	31353-0625-2	31353-0622-2
11Δ	1	Clip, complete (period 84.08 -).....	31353-0793-1	31353-0793-2
30	1	Cylinder	31353-0429-1	31353-0430-1
30a	2	Air fitting (NO)	881-249420	881-249420
	2	Air fitting (NC)	881-249420	881-249420
31	1	Piston	31353-0621-3	31353-0619-3
32	1	Guide	31353-0431-1	31353-0432-1
33Δ	1	Lock ring	519975-08	519975-09
34	1	Piston for intermediate position	31353-0425-3	31353-0426-3
		(in connection with the welded piston) (Period 83.03-)		
35Δ	1	O-ring	223406-87	223406-58
37	1	Bonnet.....	31353-0423-1	31353-0424-1
	1	Bonnet aseptiic version.....	31353-0423-2	31353-0424-2
38	3-4*	Screw.....	221131-03	221136-02
39	1	Spacer ring for two-step (6 mm).....	31353-0488-1	N/A
	1	Spacer ring for two-step (7 mm).....	N/A	31353-0489-1
	3-4*	Spacer ring for two-step (1.5 mm).....	31353-0488-2	31353-0489-2
40	3-4*	Plastic screw	9611-99-1372	9611-99-1371
41Δ	1	Packing.....	9612-3559-01	9612-3560-01
42Δ	3-4*	Fibre washer.....	9611-99-2687	9611-99-2688
Δ	1	Service kit for actuator	9611-92-0111	9611-92-0112

* Quantity 4 is valid for 3-4"

Parts marked with Δ are included in the actuator service kit.

Valve Parts

Pos.	Qty.	Description	1.5" Part No.	2" Part No.	2.5" Part No.	3" Part No.	4" Part No.
Steam seal							
20Δ	1	Lip seal, EPDM (standard)	31353-0155-1	31353-0155-1	31353-0155-1	31353-0188-1	31353-0188-1
	1	Lip seal, Nitrile	31353-0155-4	31353-0155-4	31353-0155-4	31353-0188-2	31353-0188-2
	1	Lip seal, Viton	31353-0155-3	31353-0155-3	31353-0155-3	31353-0188-3	31353-0188-3
Clamp							
15	1	Heavy duty clamp	9612-011204	9612-011204	9612-011204	9612-011205	9612-011205
Valve Body (industrial)							
18	1	Valve body, lower 2 ports, GC	31353-002970	31353-0030-7	31353-003-7	31353-0032-7	31318-0066-7
	1	Valve body, lower 2 ports, weld	31353-0375-1	31353-0376-1	31353-0380-1	31353-0381-1	31353-0026-1
	1	Valve body, lower 3 ports, GC	884-253260	884-25327	31353-0039-7	31353-0040-7	884-26875
	1	Valve body, lower 3 ports, weld	31353-0375-6	31353-0376-6	31353-0380-6	31353-0381-6	31353-0026-6
Valve Body (polished)							
18	1	Valve body, lower 2 ports, GC	31353-103010	31353-1030-2	31353-1030-3	31353-1030-4	31353-1030-5
	1	Valve body, lower 2 ports, weld	31353-1100-1	31353-1101-1	31353-1102-1	31353-1103-1	31353-1104-1
	1	Valve body, lower 3 ports, GC	31353-103110	31353-1033-2	31353-1031-3	31353-1031-4	31353-1031-5
	1	Valve body, lower 3 ports, weld	31353-1100-2	31353-1101-2	31353-1102-2	31353-1103-2	31353-1104-2
Valve Plug							
22		Plug, single, complete, EPDM (standard)	31353-1090-1	31353-1091-1	31353-1092-1	31353-1093-1	31353-1094-1
	1	Plug, single, complete, Nitrile	31353-1090-2	31353-1091-2	31353-1092-2	31353-1093-2	31353-1094-2
	1	Plug, single, complete, Viton	31353-1090-3	31353-1091-3	31353-1092-3	31353-1093-3	31353-1094-3
a	1	Stem	31353-0340-1	31353-0377-1	31353-0378-1	31353-0341-1	31353-1007-5
eΔ	1	Packing, EPDM (standard)	31353-0320-1	31353-0321-1	31353-0322-1	31353-0324-1	31353-0325-1
f	1	Washer	31353-1010-1	31353-1010-2	31353-1010-3	31353-1010-4	31353-1010-5
gΔ	1	O-ring, EPDM (standard)	990034-01	990034-01	990034-01	990034-01	990034-01
	1	O-ring, Nitrile	223404-21	223404-21	2234014-21	223404-21	223404-21
	1	O-ring, Viton	223404-35	223404-35	223404-35	223404-35	223404-35
h	1	Screw	31353-1011-1	31353-1011-1	31353-1011-1	31353-1011-1	31353-1011-1

Parts marked with Δ are included in the valve service kits.

Recommended Spare Parts: Service kit

Alfa Laval Flow Inc.
8201 104th Street
Pleasant Prairie, WI 53158-0909
Telephone: 800-558-2060
Fax: 262-947-4724
www.us.flow.alfalaval.com