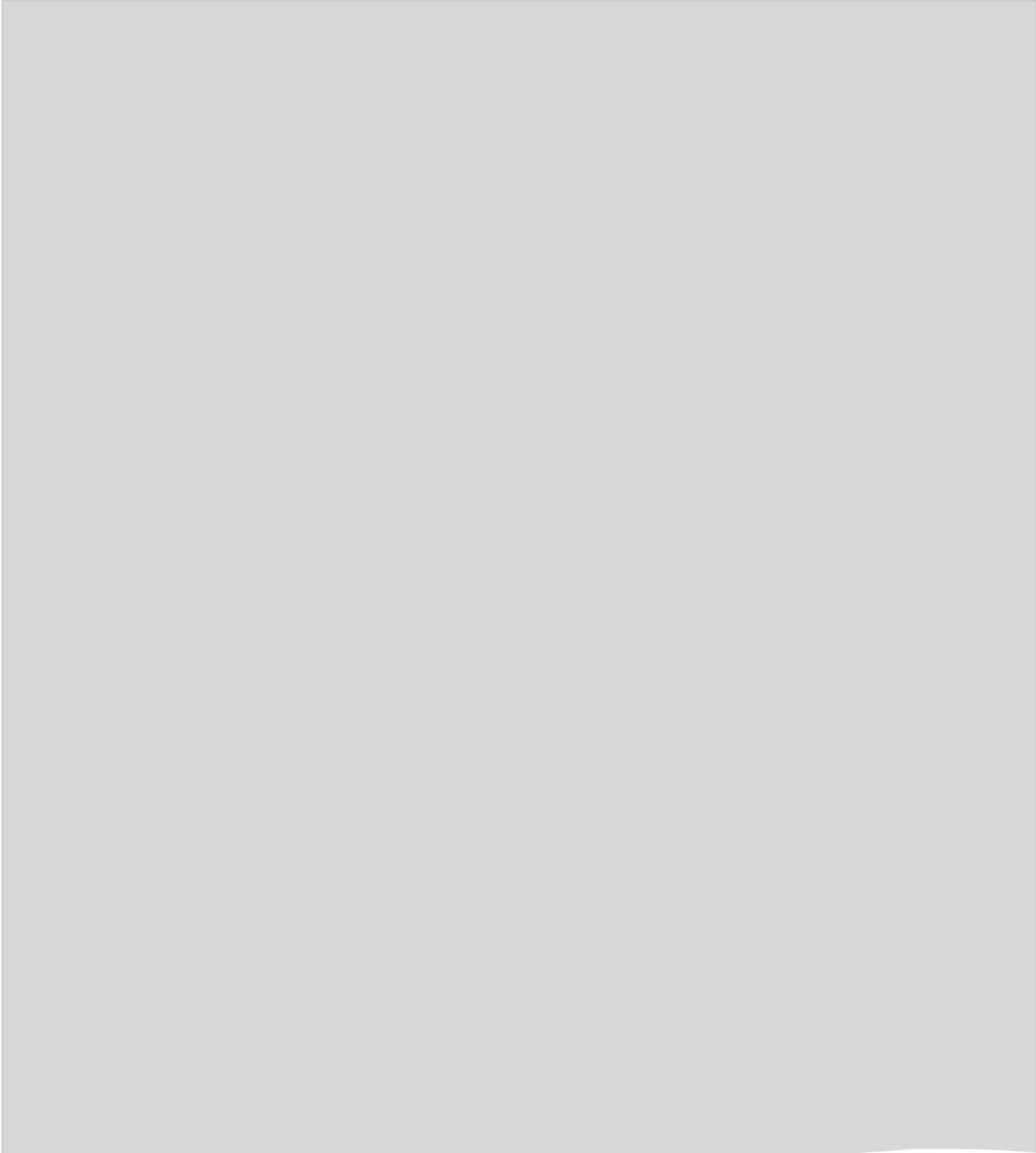
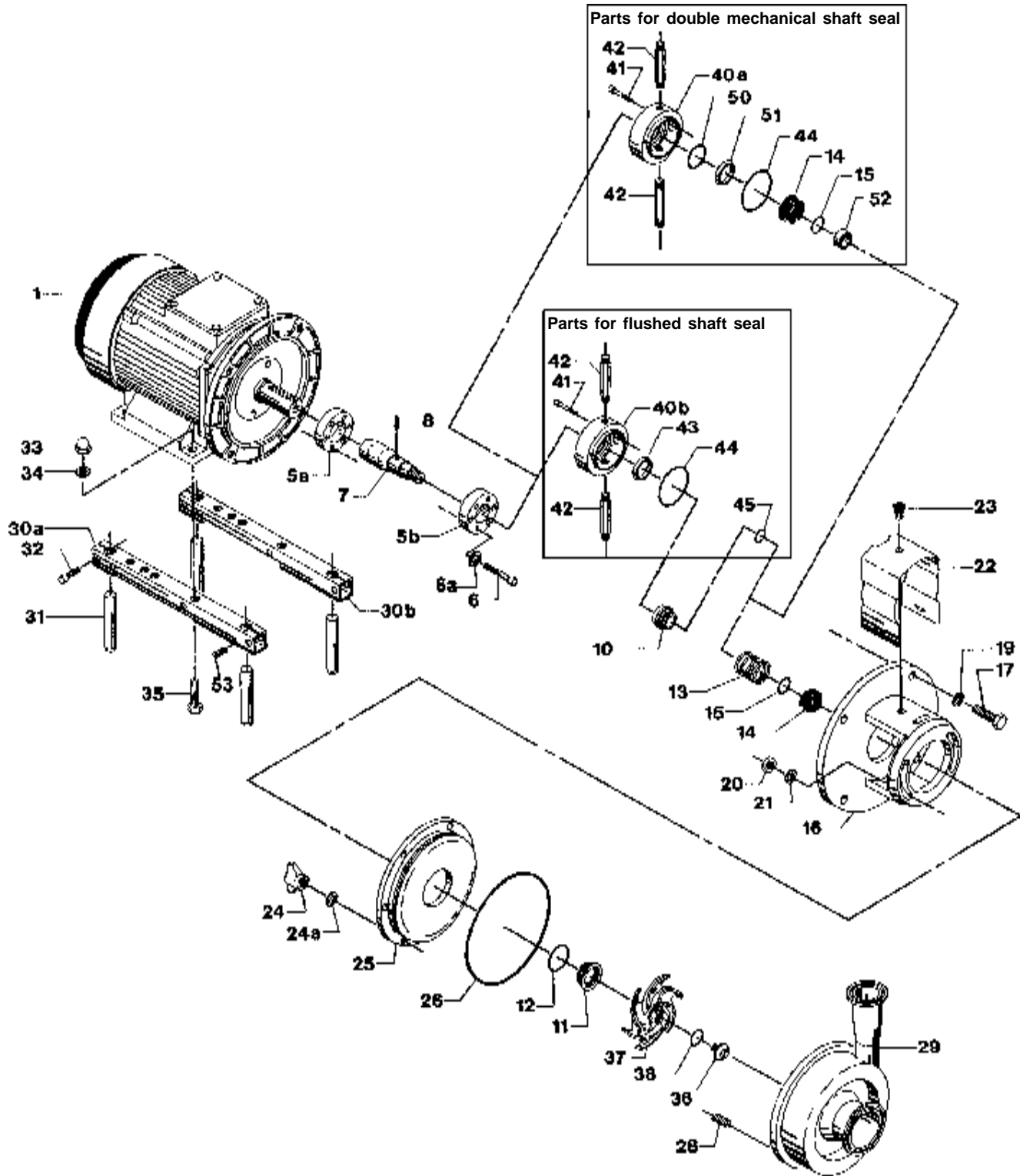


Spare Parts List

LKH-60 Centrifugal Pump





Centrifugal Pump LKH-60

| Pos. | Qty. | Description | 7.5-10 Hp Part No. | 15-20 Hp Part No. | 25-30 Hp Part No. | 40 Hp Part No. |
|-------------------------|------|--|-----------------------|----------------------|----------------------|-------------------|
| 1 | 1 | Motor | | | | |
| 5a | 1 | Compression ring with thread | 9612-13-3606 | 9612-13-3603 | 9612-13-3603 | 9612-13-3603 |
| 5b | 1 | Compression ring without thread | 9612-13-3706 | 9612-13-3703 | 9612-13-3703 | 9612-13-3703 |
| 6 | 6 | Screw | 9611-99-2338 | 9611-99-2338 | 9611-99-2504 | 9611-99-2504 |
| 6a | 6 | Washer | 9611-99-3199 | 9611-99-3199 | 9611-99-3199 | 9611-99-3199 |
| 7 | 1 | Stub shaft | 9612-13-3202 | 9612-13-3302 | 9612-13-3302 | 9612-13-3402 |
| 8 | 1 | Connex pin | 9611-99-0622 | 9611-99-0622 | 9611-99-0622 | 9611-99-0622 |
| 10 | 1 | Drive ring - single shaft seal | 9612-13-7701 | 9612-13-7701 | 9612-13-7701 | 9612-13-7701 |
| | 1 | Drive ring - flush shaft seal | 9612-13-9701 | 9612-13-9701 | 9612-13-9701 | 9612-13-9701 |
| 11 _a ◊ ◊ ◊ ◊ | 1 | Stationary seal ring, SC | 9612-13-7901 | 9612-13-7901 | 9612-13-7901 | 9612-13-7901 |
| 12 _a ◊ ◊ ◊ ◊ | 1 | Stationary O-ring, EPDM (standard) | 9611-99-2149 | 9611-99-2149 | 9611-99-2149 | 9611-99-2149 |
| | 1 | Stationary O-ring, FPM | 9611-99-2150 | 9611-99-2150 | 9611-99-2150 | 9611-99-2150 |
| | 1 | Stationary O-ring, NBR | 9611-99-2151 | 9611-99-2151 | 9611-99-2151 | 9611-99-2151 |
| | 1 | Stationary O-ring, PTFE | 9611-99-2152 | 9611-99-2152 | 9611-99-2152 | 9611-99-2152 |
| 13 _a ◊ ◊ ◊ ◊ | 1 | Spring | 9612-13-7601 | 9612-13-7601 | 9612-13-7601 | 9612-13-7601 |
| 14 _a ◊ ◊ | 1 | Rotating seal ring, Carbon | 9612-13-6401 | 9612-13-6401 | 9612-13-6401 | 9612-13-6401 |
| | 1 | Rotating seal ring, SC | 9612-13-6402 | 9612-13-6402 | 9612-13-6402 | 9612-13-6402 |
| ◊ ◊ | 2 | Rotating seal ring, Carbon | 9612-13-6401 | 9612-13-6401 | 9612-13-6401 | 9612-13-6401 |
| | 2 | Rotating seal ring, SC | 9612-13-6402 | 9612-13-6402 | 9612-13-6402 | 9612-13-6402 |
| 15 _a ◊ ◊ | 1 | Rotating O-ring, EPDM (standard) | 9611-99-2145 | 9611-99-2145 | 9611-99-2145 | 9611-99-2145 |
| | 1 | Rotating O-ring, FPM | 9611-99-2146 | 9611-99-2146 | 9611-99-2146 | 9611-99-2146 |
| | 1 | Rotating O-ring, NBR | 9611-99-2147 | 9611-99-2147 | 9611-99-2147 | 9611-99-2147 |
| | 1 | Rotating O-ring, PTFE | 9611-99-2148 | 9611-99-2148 | 9611-99-2148 | 9611-99-2148 |
| ◊ ◊ | 2 | Rotating O-ring, EPDM (standard) | 9611-99-2145 | 9611-99-2145 | 9611-99-2145 | 9611-99-2145 |
| | 2 | Rotating O-ring, FPM | 9611-99-2146 | 9611-99-2146 | 9611-99-2146 | 9611-99-2146 |
| | 2 | Rotating O-ring, NBR | 9611-99-2147 | 9611-99-2147 | 9611-99-2147 | 9611-99-2147 |
| | 2 | Rotating O-ring, PTFE | 9611-99-2148 | 9611-99-2148 | 9611-99-2148 | 9611-99-2148 |
| 16 | 1 | Adaptor | 9612-13-5912 | 9612-13-5913 | 9612-13-5918 | 9612-13-4302 |
| 17 | 4 | Adaptor screw | 881-30173 | 881-30173 | 881-30173 | 881-30173 |
| 19 | 4 | Adaptor spring washer | 881-29835 | 881-29835 | 881-29835 | 881-29835 |
| 20 | 2 | Adaptor nut | 9611-99-0353 | 9611-99-0353 | 9611-99-0353 | 9611-99-0353 |
| 21 | 2 | Washer | 9611-99-2559 | 9611-99-2559 | 9611-99-2559 | 9611-99-2559 |
| 22 | 1 | Safety guard | 9612-13-1107 | 9612-13-1108 | 9612-13-1108 | 9612-13-1108 |
| 23 | 1 | Safety guard screw | 31460-1309-1 | 31460-1309-1 | 31460-1309-1 | 31460-1309-1 |
| 24 | 6 | Wingnuts | 9611-41-6892 | 9611-41-6892 | 9611-41-6892 | 9611-41-6892 |
| 24a | 6 | Spring washer | 9611-99-1888 | 9611-99-1888 | 9611-99-1888 | 9611-99-1888 |
| 25 | 1 | Back plate polished | 9612-13-8418 | 9612-13-8418 | 9612-13-8418 | 9612-13-8418 |
| 26 ◊ ◊ | 1 | Joint ring, EPDM (standard) | 9611-99-2171 | 9611-99-2171 | 9611-99-2171 | 9611-99-2171 |
| | 1 | Joint ring, FPM | 9611-99-2172 | 9611-99-2172 | 9611-99-2172 | 9611-99-2172 |
| | 1 | Joint ring, NBR | 9611-99-2173 | 9611-99-2173 | 9611-99-2173 | 9611-99-2173 |
| | 1 | Joint ring, PTFE | 9611-99-2174 | 9611-99-2174 | 9611-99-2174 | 9611-99-2174 |
| 28 | 6 | Stud bolt | 9611-99-2169 | 9611-99-2169 | 9611-99-2169 | 9611-99-2169 |
| 29 | 1 | Pump casing 4x4 | 883-41705 | 883-41705 | 883-41705 | 883-41286 |
| 30a-35 | 1 | Leg assembly | 31460-1301-4 | 31460-1302-3 | 31460-1302-4 | 31460-1302-5 |
| 36 | 1 | Impeller screw | 9612-13-9603 | 9612-13-9603 | 9612-13-9603 | 9612-13-9603 |
| 37 | 1 | Impeller polished, full | 9612-12-8306 | 9612-12-8306 | 9612-12-8306 | 9612-12-8306 |
| 38 ◊ ◊ | 1 | Impeller O-ring, EPDM (standard) | 9611-99-2145 | 9611-99-2145 | 9611-99-2145 | 9611-99-2145 |
| | 1 | Impeller O-ring, FPM | 9611-99-2146 | 9611-99-2146 | 9611-99-2146 | 9611-99-2146 |
| | 1 | Impeller O-ring, NBR | 9611-99-2147 | 9611-99-2147 | 9611-99-2147 | 9611-99-2147 |
| | 1 | Impeller O-ring, PTFE | 9611-99-2148 | 9611-99-2148 | 9611-99-2148 | 9611-99-2148 |
| 40a | 1 | Seal housing - double mechanical | 9612-13-3902 | 9612-13-3902 | 9612-13-3902 | 9612-13-3902 |
| 40b | 1 | Seal housing - flushed | 9612-13-3901 | 9612-13-3901 | 9612-13-3901 | 9612-13-3901 |
| 41 | 2 | Screw for seal housing | 9611-99-0203 | 9611-99-0203 | 9611-99-0203 | 9611-99-0203 |
| 42 | 2 | Water flush pipe | 31457-0056-1 | 31457-0056-1 | 31457-0056-1 | 31457-0056-1 |
| 43 ◊ | 1 | Lip seal | 31446-0088-2 | 31446-0088-2 | 31446-0088-2 | 31446-0088-2 |
| 44 ◊ ◊ ◊ | 1 | Seal housing O-ring | 9611-99-2159 | 9611-99-2159 | 9611-99-2153 | 9611-99-2153 |
| 45 ◊ | 1 | Drive ring O-ring | 611-99-21453 | 611-99-21453 | 9611-99-2145 | 9611-99-2145 |
| 50 ◊ | 1 | O-ring | 9611-99-2156 | 9611-99-2156 | 9611-99-2156 | 9611-99-2156 |
| 51 ◊ | 1 | Sec. stationary seal ring, SC | 9612-13-8302 | 9612-13-8302 | 9612-13-8302 | 9612-13-8302 |
| 52 ◊ | 1 | Spacer | 9612-30-8901 | 9612-30-8901 | 9612-30-8901 | 9612-30-8901 |

Parts marked with _a, ø, ◊ are included in the seal kits.

Parts marked with _a, ø, ◊, ◻, ◯, ◊ are included in the service kits.

Recommended Spare Parts: Service kits

Alfa Laval

| Pos. | Qty. | Description | 1-40 Hp Part No. |
|--|------|--|---------------------|
| Seal Kit for Single Shaft Seal | | | |
| à | 1 | C/SC seal kit, EPDM | 9612-1296-09 |
| à | 1 | C/SC seal kit, NBR | 9612-1296-10 |
| à | 1 | C/SC seal kit, FPM | 9612-1296-11 |
| à | 1 | SC/SC seal kit, EPDM | 9612-1296-05 |
| à | 1 | SC/SC seal kit, NBR | 9612-1296-06 |
| à | 1 | SC/SC seal kit, FPM | 9612-1296-07 |
| Seal Kit for Flushed Shaft Seal | | | |
| ø | 1 | C/SC seal kit, EPDM | 9612-1296-09 |
| ø | 1 | C/SC seal kit, NBR | 9612-1296-10 |
| ø | 1 | C/SC seal kit, FPM | 9612-1296-11 |
| ø | 1 | SC/SC seal kit, EPDM | 9612-1296-05 |
| ø | 1 | SC/SC seal kit, NBR | 9612-1296-06 |
| ø | 1 | SC/SC seal kit, FPM | 9612-1296-07 |
| Seal Kit for Double Mechanical Shaft Seal | | | |
| ◆ | 1 | C/SC seal kit, EPDM | 9612-1296-13 |
| ◆ | 1 | C/SC seal kit, NBR | 9612-1296-14 |
| ◆ | 1 | C/SC seal kit, FPM | 9612-1296-15 |
| ◆ | 1 | SC/SC seal kit, EPDM | 9612-1296-17 |
| ◆ | 1 | SC/SC seal kit, NBR | 9612-1296-18 |
| ◆ | 1 | SC/SC seal kit, FPM | 9612-1296-19 |
| Parts marked with à, ø, ◆ are included in the seal kits. | | | |
| Service Kit for Single Shaft Seal | | | |
| □ | 1 | Service kit, EPDM | 9611-92-2130 |
| □ | 1 | Service kit, NBR | 9611-92-2131 |
| □ | 1 | Service kit, FPM | 9611-92-2132 |
| □ | 1 | Service kit, PTFE | 9611-92-2133 |
| Service Kit for Flushed Shaft Seal | | | |
| ○ | 1 | Service kit, EPDM | 9611-92-2134 |
| ○ | 1 | Service kit, NBR | 9611-92-2135 |
| ○ | 1 | Service kit, FPM | 9611-92-2136 |
| ○ | 1 | Service kit, PTFE | 9611-92-2137 |
| Service Kit for Double Mechanical Shaft Seal | | | |
| ◇ | 1 | Service kit, EPDM | 9911-92-2234 |
| ◇ | 1 | Service kit, NBR | 9611-92-2235 |
| ◇ | 1 | Service kit, FPM | 9611-92-2236 |
| ◇ | 1 | Service kit, PTFE | 9611-92-2237 |
| Parts marked with à, ø, ◆, □, ○, ◇ are included in the service kits. | | | |
| Conversion Kits | | | |
| 1 | | Single to flushed shaft seal..... | 9611-92-2042 |
| | | (The conversion kit contains Pos. 10, 40, 41, 42, 43, 44, 45) | |
| 1 | | Single to double mechanical shaft seal | 9611-92-2175 |
| | | (The conversion kit contains Pos. 14, 15, 40a, 41, 42, 44, 50, 51, 52) | |
| 1 | | Flushed to double mechanical shaft seal..... | 9611-92-2176 |
| | | (The conversion kit contains Pos. 14, 40a, 50, 51, 52) | |
| Accessories | | | |
| 1 | | Tool complete | 9612-1371-01 |

Recommended Spare Parts: Service kits

Alfa Laval
8201 104th Street
Pleasant Prairie, WI 53158-0909
Telephone: 800-558-2060
Fax: 262-947-4724
www.us.flow.alfalaval.com